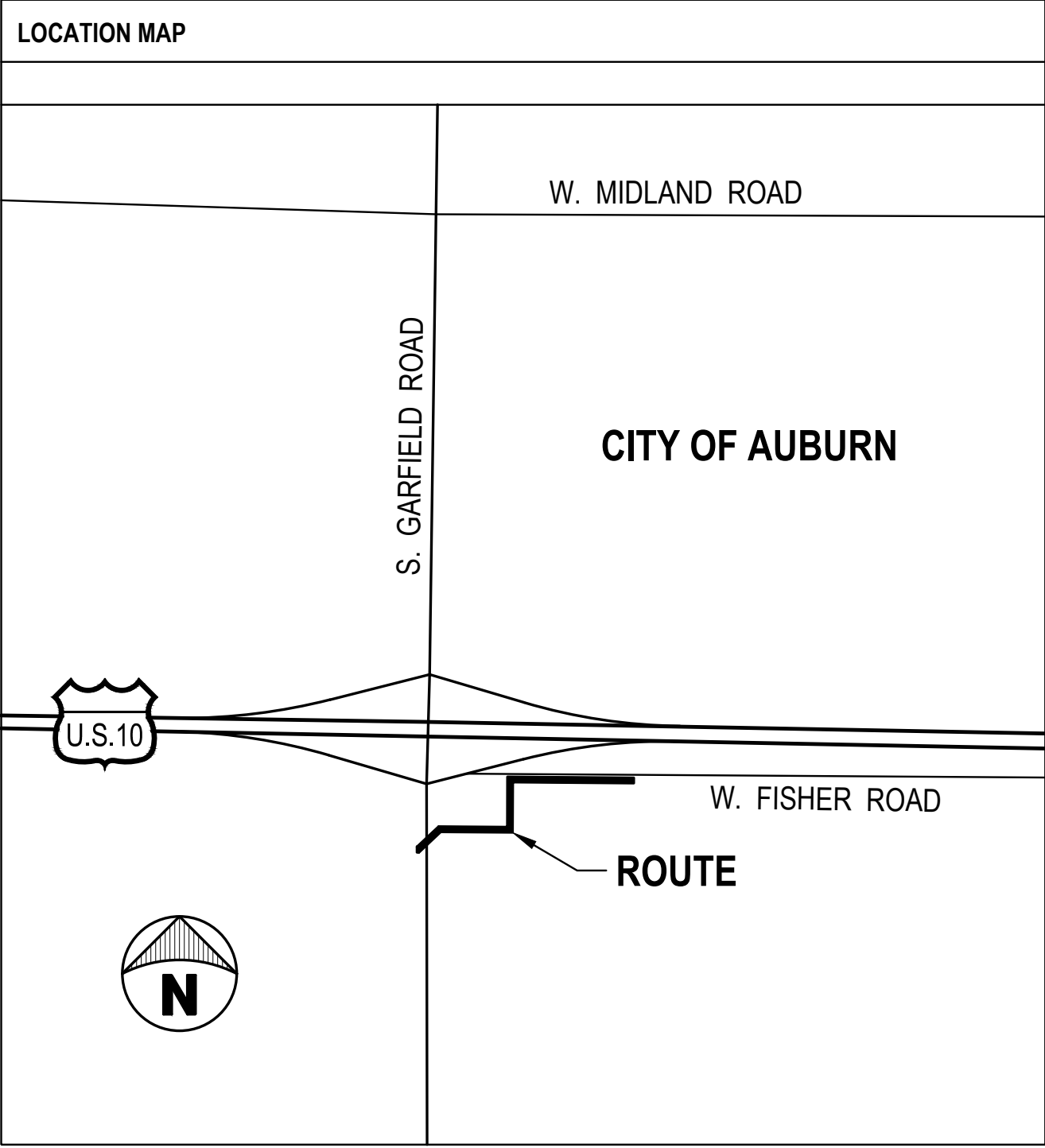


WILLIAMS CHARTER TOWNSHIP

SEWER AND WATERMAIN EXTENSION S. GARFIELD ROAD TO W. FISHER ROAD

WILLIAMS CHARTER TOWNSHIP, BAY COUNTY, MI 48611

SHEET INDEX		
		MM-DD-YY ISSUANCE DESCRIPTION
NUMBER	TITLE	
TS	TITLE SHEET	X
C1.0	GENERAL NOTES AND LEGEND	X
C2.0	TOPOGRAPHIC PLAN	X
C3.0	WATERMAIN PLAN AND PROFILE STA. 0+00 TO STA. 3+75	X
C3.1	WATERMAIN PLAN AND PROFILE STA. 3+75 TO STA. 7+50	X
C3.2	WATERMAIN PLAN AND PROFILE STA. 7+50 TO STA. 12+91	X
C4.0	SANITARY SEWER PLAN AND PROFILE STA. 0+00 TO STA. 4+25	X
C4.1	SANITARY SEWER PLAN AND PROFILE STA. 4+25 TO STA. 8+75	X
C4.2	SANITARY SEWER PLAN AND PROFILE STA. 8+75 TO STA. 13+45	X




CONTACT INFORMATION



OWNER / CLIENT:
WILLIAMS CHARTER TOWNSHIP
1080 W. MIDLAND ROAD
AUBURN, MI 48611
(989) 662-4241
www.williamstwp.com

JERRY PUTT
TOWNSHIP SUPERVISOR
(989) 662-4241
supervisor@williamstwp.com

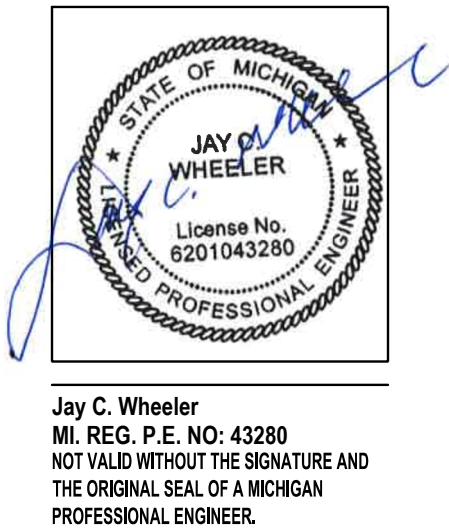



PROJECT MANAGER: J. WHEELER, P.E.
PHONE: (989) 752-5000
EMAIL: jwheeler@kibbe.com
WEB: www.kibbe.com

PROJECT DESIGNER: D.W. BANASZAK
PHONE: (989) 752-5000
EMAIL: dbanaszak@kibbe.com

CODE AUTHORITY:
BUILDING DEPARTMENT
1080 W. MIDLAND ROAD
AUBURN, MI 48611
(989) 662-4241

PATRICK MILLER
ZONING ADMINISTRATOR
zoning@williamstwp.com





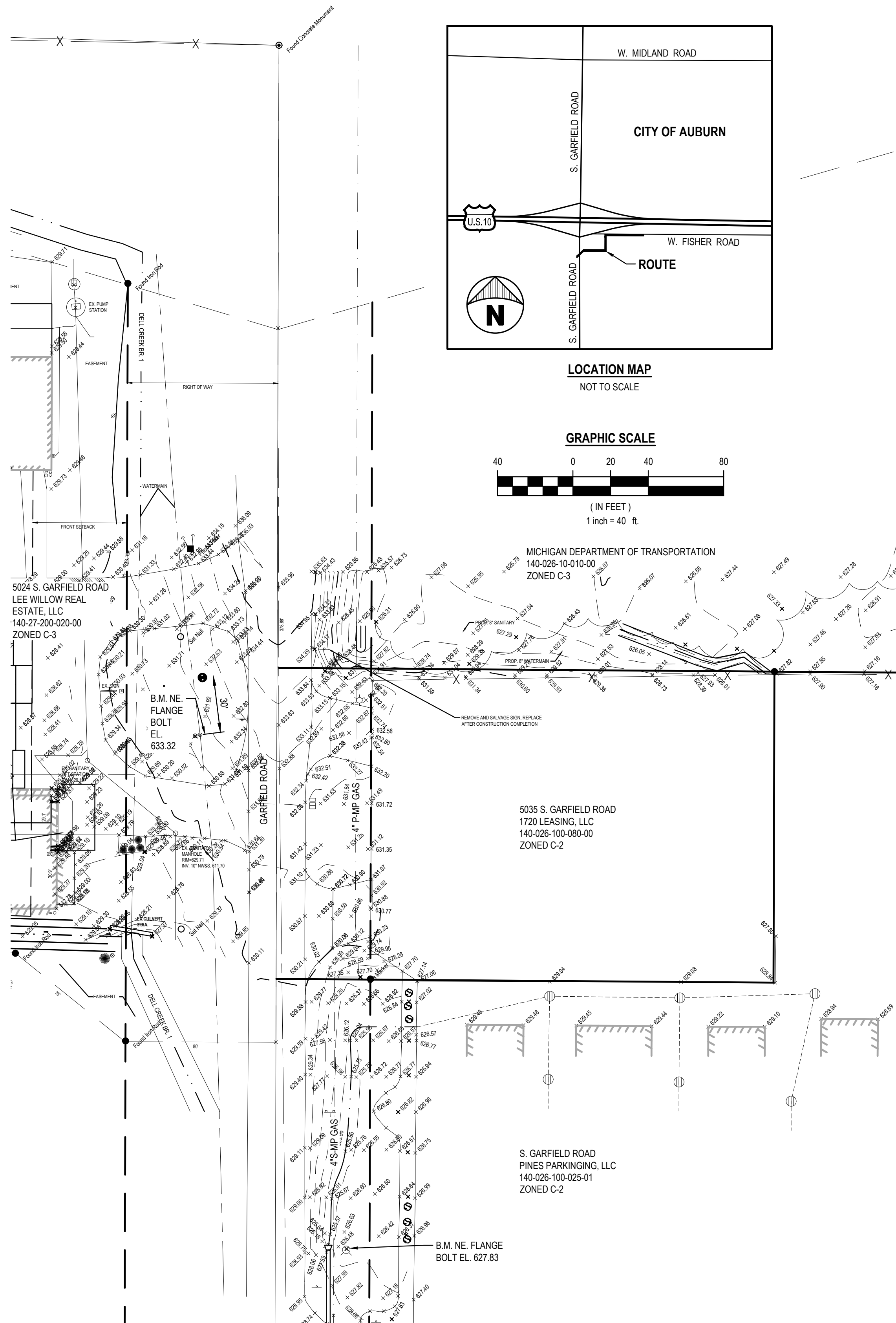
WILLIAMS CHARTER TOWNSHIP
SANITARY SEWER & WATERMAIN EXTENSION
W. FISHER ROAD
AUBURN, MI

TITLE SHEET

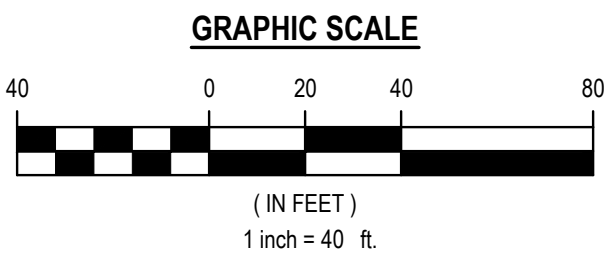
DATE	7-25-25								
STATUS / REVISIONS	RELEASED FOR BIDS								
NO.									
CHECKED BY: J. WHEELER									
DESIGNED BY: D.W. BANASZAK									
DRAWN BY: D.W. BANASZAK									
PROJ #: 25-1247-0021									
SHEET TS									

©2024/2025 W&A. ALL RIGHTS RESERVED. THE DOCUMENT AND DESIGN INFORMATION ARE THE PROPERTY OF W&A. NO REPRODUCTIONS OR TRANSMISSIONS OF WORK ARE PERMITTED UNLESS GRANTED BY W&A.

7/16/2025 12:54 PM



LOCATION MAP
NOT TO SCALE



UTILITY NOTE

THE UTILITY LOCATIONS AS HEREIN SHOWN ARE BASED ON FIELD OBSERVATIONS AND A CAREFUL REVIEW OF MUNICIPAL AND UTILITY RECORDS. HOWEVER, IT IS NOT POSSIBLE TO DETERMINE THE PRECISE SIZE, LOCATION, DEPTH, PRESSURE, OR ANY OTHER CHARACTERISTICS OF UNDERGROUND UTILITIES, TANKS OR SEPTIC FIELDS WITHOUT EXCAVATION. THEREFORE, WE CANNOT GUARANTEE THE ACCURACY OF COMPLETENESS OF THE BURIED UTILITY INFORMATION HEREIN SHOWN. THE CONTRACTOR SHALL CALL "MISS DIG" AT (811) A MINIMUM OF THREE WORKING DAYS PRIOR TO ANY EXCAVATION. IT SHALL BE THE RESPONSIBILITY OF THE CONTRACTOR TO VERIFY THESE LOCATIONS PRIOR TO CONSTRUCTION AND MAKE EVERY EFFORT TO PROTECT AND/OR RELOCATE THEM AS REQUIRED. THE CONTRACTOR SHALL NOTIFY THE ENGINEER OF DESIGN AS SOON AS POSSIBLE IN THE EVENT A DISCREPANCY IS FOUND.

TOPOGRAPHIC SURVEY

SCALE: 1" = 40'

LEGEND	
	EX. SPOT GRADE
	EX. CONTOUR (C-CONT-MNR LAYER)
	EX. CONTOUR (C-CONT-MJR LAYER)
	EX. CENTERLINE DITCH
	EX. SANITARY SEWER W/MANHOLE
	EX. STORM SEWER
	EX. WATERMAIN
	EX. ELECTRIC LINES
	EX. CHAINLINK FENCE
	EX. GAS LINES
	EX. COMMUNICATION LINES
	EX. OVERHEAD UTILITY WIRES
	EX. RAILROAD CENTERLINE
	EX. BUILDINGS
	EX. BITUMINOUS PAVEMENT
	EX. CONCRETE PAVEMENT
	EX. SIGN WITH POST
	EX. STEEL POST/BOLLARD
	EX. STORM CURB INLET
	EX. STORM CATCH BASIN/MANHOLE
	EX. SANITARY MANHOLE
	EX. HYDRANT
	EX. WATER OR GAS VALVE
	EX. UTILITY POLE
	EX. SEWER CLEANOUT
	EX. SPRINKLER/SPIGOT
	EX. WATER WELL
	EX. DRINKING FOUNTAIN
	EX. LIGHT POLE
	EX. UTILITY RISER
	EX. MAILBOX
	EX. DOWNSPOUT
	EX. FLAG POLE
	EX. ELECTRICAL BOX
	EX. TRANSFORMER
	PROP. HYDRANT
	PROP. WATER VALVE
	PROP. SANITARY MANHOLE
	PROP. STORM CATCH BASIN/MANHOLE
	PROP. SIGN
	PROP. STEEL POST/BOLLARD
	PROP. CENTERLINE DITCH
	PROP. SANITARY SEWER
	PROP. STORM SEWER
	PROP. WATERMAIN
	PROP. GAS LINE
	PROP. CHAINLINK FENCE
	PROP. WOOD FENCE
	PROP. ELECTRIC LINES
	PROP. COMMUNICATION LINES
	PROP. OVERHEAD UTILITY WIRES
	PROP. DRAINAGE FLOW
	FINISH SURFACE
	TOP OF CURB
	TOP OF WALK
	PROP. SPOT ELEVATION
	PROP. GRADE CONTOUR (MAJR)
	PROP. GRADE CONTOUR (MINR)
	PROP. CONCRETE PAVEMENT
	PROP. BITUMINOUS SURFACE
	PROP. LIGHT POLE
	SOIL BORING
	UNDERGROUND
	OVERHEAD
	PROP. BUILDING



Know what's below.
Call before you dig.

WILLIAMS CHARTER TOWNSHIP SANITARY SEWER & WATERMAIN EXTENSION W. FISHER ROAD AUBURN, MI

TOPOGRAPHIC SURVEY

DATE	7-22-25
STATUS/REVISIONS	RELEASED FOR BIDS
NO.	
CHECKED BY: J. WHEELER	
DESIGNED BY: D.W. BANASZAK	
DRAWN BY: D.W. BANASZAK	
PROJ #:	25-1247-0021

SHEET
C2.0

PRINTED: 7/16/2025 12:54:55 PM



PROPOSED WATERMAIN
PLAN AND PROFILE STA. 2+75 TO STA. 7+50

SHEET
C3.1



Know what's **below**.
Call before you dig.

PROPOSED WATERMAIN
PLAN AND PROFILE STA. 7+50 TO STA. 13+00

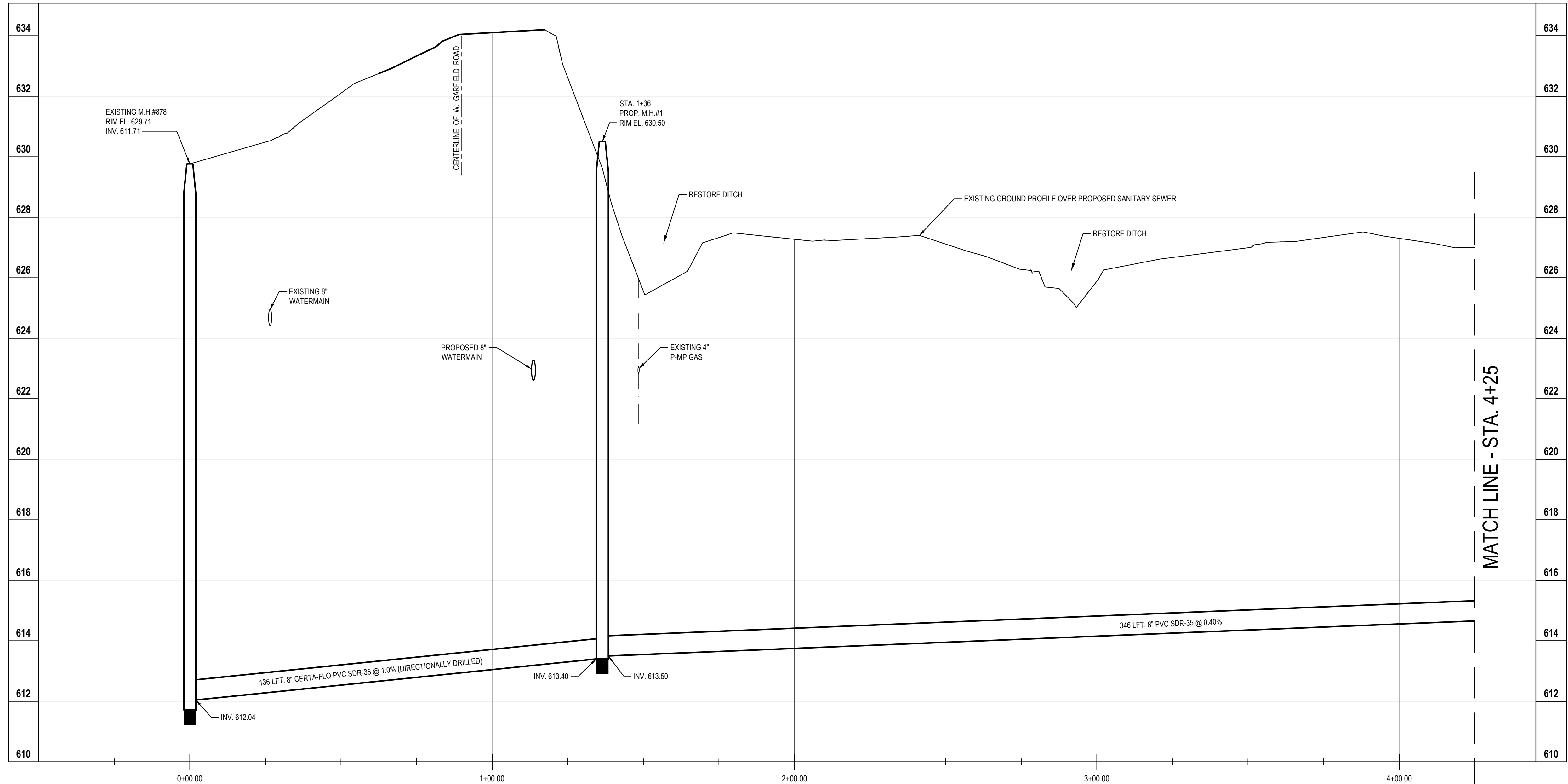
SHEET
C3.2



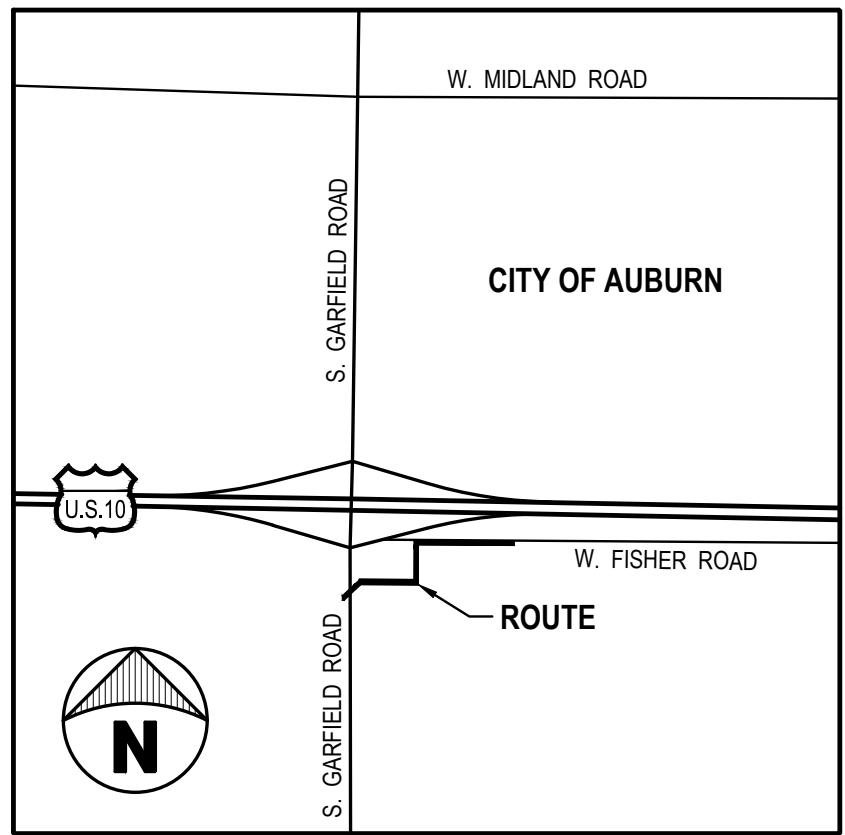
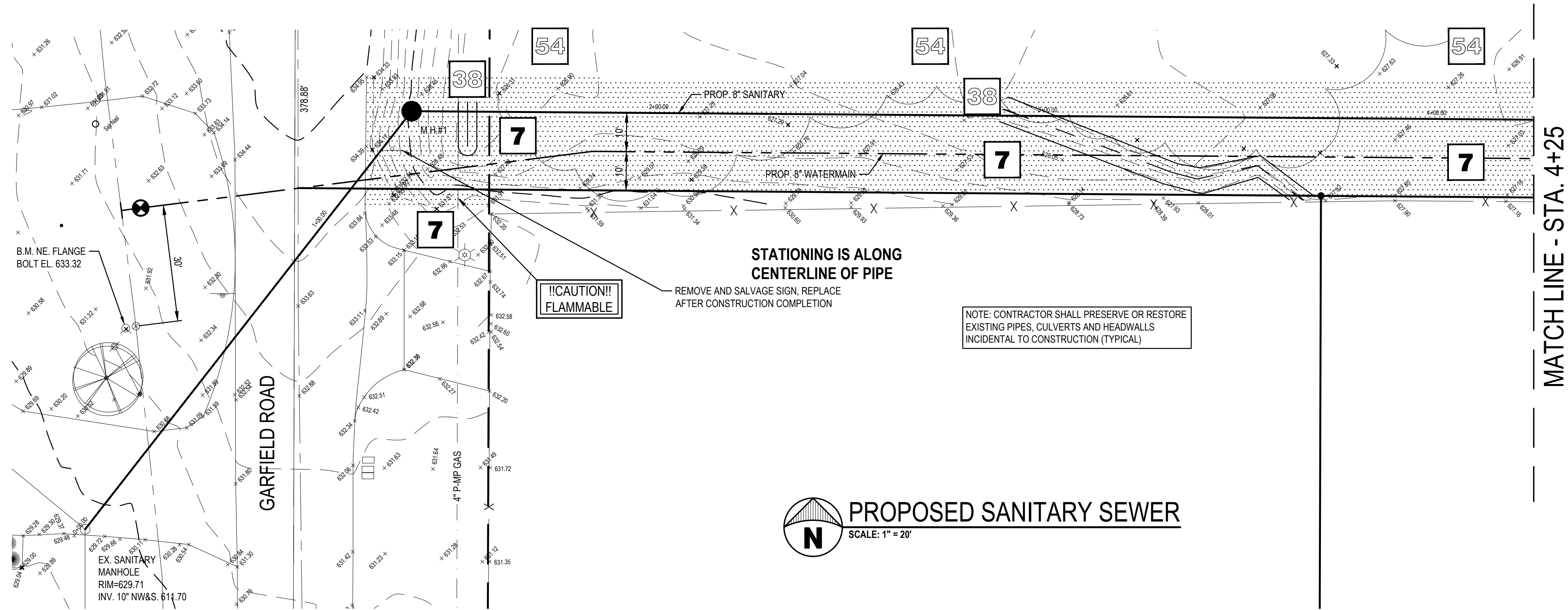
©2024/2025 W&A. ALL RIGHTS RESERVED. THE DOCUMENT AND DESIGN APPROVED WITHIN ARE THE PROPERTY OF W&A. NO REPRODUCTIONS, COPIES, TRANSMISSIONS OR WORKS DERIVED THEREFROM ARE PERMITTED WITHOUT WRITTEN PERMISSION OF W&A.



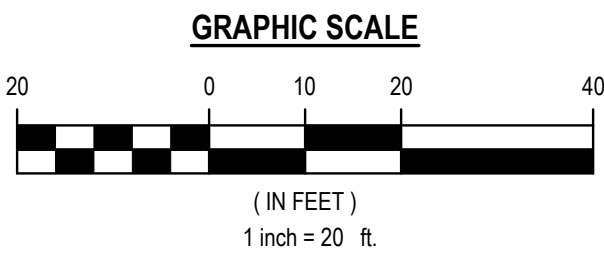
Know what's below.
Call before you dig.



PROFILE SCALE:
HORIZONTAL: 1"=20'
VERTICAL: 1"=2'



LOCATION MAP
NOT TO SCALE



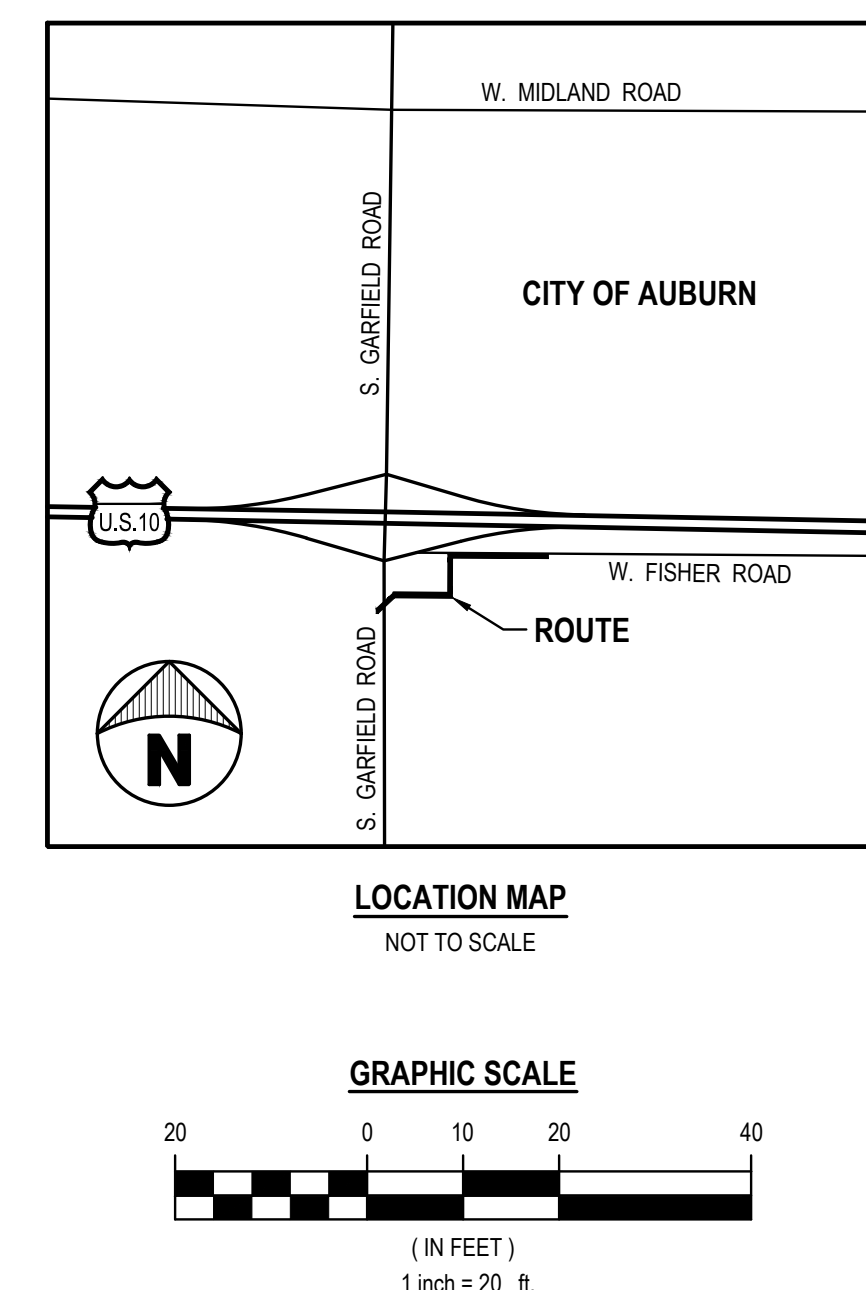
WILLIAMS CHARTER TOWNSHIP
SANITARY SEWER & WATERMAIN EXTENSION
W. FISHER ROAD
AUBURN, MI

PROPOSED SANITARY SEWER
PLAN AND PROFILE STA. 0+00 TO STA. 4+75

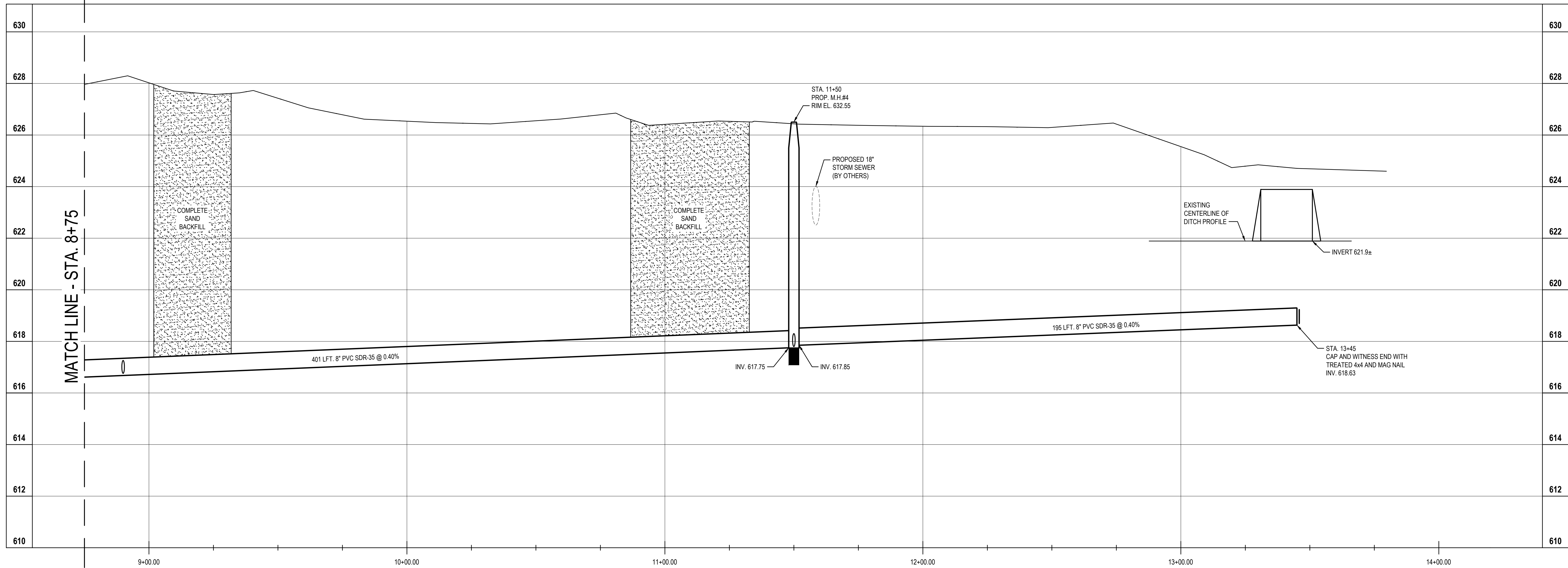
NO.	STATUS / REVISIONS	DATE
1	RELEASED FOR BIDS	7-23-25
2		
3		
4		
5		
6		
7		
8		
9		
10		
11		
12		
13		
14		
15		
16		
17		
18		
19		
20		
21		
22		
23		
24		
25		
26		
27		
28		
29		
30		
31		
32		
33		
34		
35		
36		
37		
38		
39		
40		
41		
42		
43		
44		
45		
46		
47		
48		
49		
50		
51		
52		
53		
54		
55		
56		
57		
58		
59		
60		
61		
62		
63		
64		
65		
66		
67		
68		
69		
70		
71		
72		
73		
74		
75		
76		
77		
78		
79		
80		
81		
82		
83		
84		
85		
86		
87		
88		
89		
90		
91		
92		
93		
94		
95		
96		
97		
98		
99		
100		

SHEET
C4.0

PRINTED: 7/16/2025 12:53:04 PM



©2024/2025 WMA. ALL RIGHTS RESERVED. THE DOCUMENT AND DESIGN ARE THE PROPERTY OF WMA. NO REPRODUCTIONS OR TRANSMISSIONS OF WORK ARE PERMITTED UNLESS GRANTED BY WMA.



PROFILE SCALE:
HORIZONTAL: 1"=20'
VERTICAL: 1"=2'



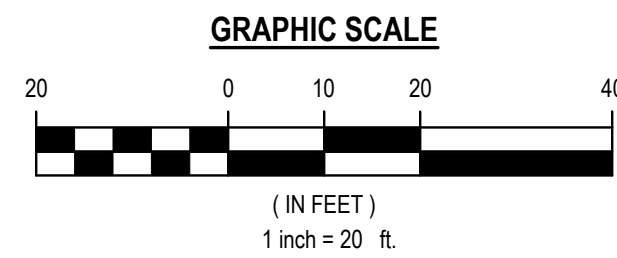
Know what's below.
Call before you dig.

MATCH LINE - STA. 8+75

STA. 8+90
8"x6" WYE WITH 20
LFT. 6" SERVICE LEAD
AND PROPERTY LINE
RISER

MARK AND WITNESS
END WITH TREATED
4x4 WITH MAGNETIC
NAIL IN TOP

STATIONING IS ALONG
CENTERLINE OF PIPE



PROPOSED SANITARY SEWER

SCALE: 1" = 20'

NOTE: CONTRACTOR SHALL PRESERVE OR RESTORE
EXISTING PIPES, CULVERTS AND HEADWALLS
INCIDENTAL TO CONSTRUCTION (TYPICAL)

W. FISHER ROAD

68
626.00
Centerline Road

69
625.50
Top of Ditch

71
621.87
System of Ditch

73
625.43
Top of Ditch

75
626.10
Ground

WILLIAMS CHARTER TOWNSHIP
SANITARY SEWER & WATERMAIN EXTENSION
W. FISHER ROAD
AUBURN, MI

PROPOSED SANITARY SEWER
PLAN AND PROFILE STA. 8+75 TO STA. 14+00

NO.	STATUS / REVISIONS RELEASED FOR BIDS	DATE
1	CHECKED BY: J. WHEELER	7/25/25
2	DESIGNED BY: D.W.BANASZAK	
3	DRAWN BY: D.W.BANASZAK	
4	PROJ # 25-1247-0021	

SHEET
C4.2

PRINTED: 7/16/2025 12:53:08 PM



WILLIAM A. KIRBE & ASSOCIATES, INC.
ENGINEERS | ARCHITECTS | SURVEYORS